

FROM 3 TO 16 DECEMBER 2016

## GRENOBLE ➔ L'ALPE D'HUEZ

	MONDAY TO FRIDAY		FRIDAY ONLY			SATURDAY			SUNDAY & BANK HOLIDAYS
GRENOBLE Gare routière	13:15	15:00	16:15	18:15	22:15	07:30	13:15	15:00	07:30
L'ALPE D'HUEZ Village	14:35	16:20	17:35	19:35	23:35	-	14:35	16:20	-
L'ALPE D'HUEZ Office de Tourisme	14:45	16:30	17:45	19:45	23:45	09:05	14:45	16:30	09:05
L'ALPE D'HUEZ L'Éclose	14:53	16:38	17:53	19:53	23:53	09:12	14:53	16:38	09:12
L'ALPE D'HUEZ Les Bergers	14:55	16:40	17:55	19:55	23:55	09:15	14:55	16:40	09:15
L'ALPE D'HUEZ L'Étendard	15:00	16:45	18:00	20:00	00:00	09:20	15:00	16:45	09:20

## L'ALPE D'HUEZ ➔ GRENOBLE

	MONDAY TO FRIDAY		SATURDAY			SUNDAY & BANK HOLIDAYS
L'ALPE D'HUEZ L'Éclose	08:00	10:30	08:00	10:30	16:30	16:30
L'ALPE D'HUEZ Les Bergers	08:05	10:35	08:05	10:35	16:35	16:35
L'ALPE D'HUEZ L'Étendard	08:08	10:38	08:08	10:38	16:38	16:38
L'ALPE D'HUEZ Office de Tourisme	08:15	10:45	08:15	10:45	16:45	16:45
L'ALPE D'HUEZ Village	08:25	10:55	08:25	10:55	16:55	16:55
GRENOBLE Gare routière	09:45	12:15	09:45	12:15	18:15	18:15



**SPECIAL FARE**  
Transisère subscribers

### Connection at Bourg d'Oisans during certain periods.

Times given are for information only and are subject to weather and traffic conditions. Arrive early at the bus stops and be sure to anticipate enough time for any connections.

DECEMBER 17, 2016 TO APRIL 2, 2017

From 2016, december 3 to 16 and 2017, april 3 to 30,  
see all timetables on [WWW.TRANSALTITUDE.FR](http://WWW.TRANSALTITUDE.FR)

L'ALPE D'HUEZ → GRENOBLE

	MONDAY / TUESDAY / WEDNESDAY					THURSDAY					FRIDAY				
L'ALPE D'HUEZ L'Écluse	08:00	11:00	13:00	16:30	17:00	08:00	11:00	13:00	16:30	17:00	08:00	11:00	13:00	16:00	17:00
L'ALPE D'HUEZ Les Bergers	08:05	11:05	13:05	16:35	17:05	08:05	11:05	13:05	16:35	17:05	08:05	11:05	13:05	16:05	17:05
L'ALPE D'HUEZ L'Étendard	08:08	11:08	13:08	16:38	17:08	08:08	11:08	13:08	16:38	17:08	08:08	11:08	13:08	16:08	17:08
L'ALPE D'HUEZ Office de Tourisme	08:15	11:15	13:15	16:45	17:15	08:15	11:15	13:15	16:45	17:15	08:15	11:15	13:15	16:15	17:15
L'ALPE D'HUEZ Village	08:25	11:25	13:25	16:55	17:25	08:25	11:25	13:25	16:55	17:25	08:25	11:25	13:25	16:25	17:25
GRENOBLE Gare routière	09:45	12:45	14:45	18:15	18:45	09:45	12:45	14:45	18:15	18:45	09:45	12:45	14:45	17:45	18:45

	SATURDAY										SUNDAY & BANK HOLIDAYS						
						iDTGV											
L'ALPE D'HUEZ L'Écluse	06:00	07:15	08:15	10:15	12:00	13:00	14:00	16:00	17:00	18:00	07:15	10:15	12:00	14:00	16:00	17:00	18:00
L'ALPE D'HUEZ Les Bergers	06:05	07:20	08:20	10:20	12:05	13:05	14:05	16:05	17:05	18:05	07:20	10:20	12:05	14:05	16:05	17:05	18:05
L'ALPE D'HUEZ L'Étendard	06:08	07:23	08:23	10:23	12:08	13:08	14:08	16:08	17:08	18:08	07:23	10:23	12:08	14:08	16:08	17:08	18:08
L'ALPE D'HUEZ Office de Tourisme	06:15	07:30	08:30	10:30	12:15	13:15	14:15	16:15	17:15	18:15	07:30	10:30	12:15	14:15	16:15	17:15	18:15
L'ALPE D'HUEZ Village	06:25	07:40	08:40	10:40	12:25	13:25	14:25	16:25	17:25	18:25	07:40	10:40	12:25	14:25	16:25	17:25	18:25
GRENOBLE Gare routière	08:30	09:00	10:45	12:45	14:30	15:30	16:30	18:30	19:30	20:30	09:45	12:45	14:30	16:30	17:45	19:30	20:30



Only during Zone A school holidays: from 17/12/16 to 01/01/17 and from 18/02 to 05/03/17

Only during WINTER school holidays from 04/02 au 05/03/17

**iDTGV** Coinciding with iDTGV trains times

Connection at Bourg d'Oisans during certain periods.

More times may be added during the ski season.

Times given are for information only and are subject to weather and traffic conditions. Arrive early at the bus stops and be sure to anticipate enough time for any connections.



L'ALPE D'HUEZ FROM 39€

# Skiligne

## LE PACK ALTITUDE

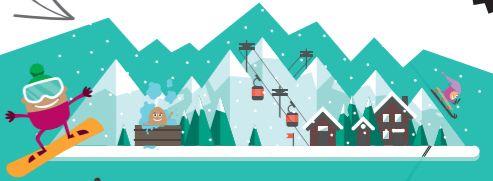


**SKILIGNE TO WIN!**  
Contests, good deals, promotions on our facebook pagebook



All the dates and timetables on [www.transaltitude.fr/skiligne](http://www.transaltitude.fr/skiligne)

alpe huez



# YOUR TICKET TO HEAPS OF WINTER FUN



**TRANSALTITUDE.FR**



DECEMBER 17, 2016 TO APRIL 2, 2017

From 2016, december 3 to 16 and 2017, april 3 to 30  
see all timetables on [WWW.TRANSALTITUDE.FR](http://WWW.TRANSALTITUDE.FR)

**GRENOBLE → L'ALPE D'HUEZ**

	MONDAY / TUESDAY / WEDNESDAY				THURSDAY				FRIDAY				iDTGV		
<b>GRENOBLE</b> Gare routière	07:30	11:15	13:45	16:15	07:30	11:15	13:45	16:15	07:30	11:15	13:45	16:15	18:15	22:15	
<b>L'ALPE D'HUEZ</b> Village	08:50	12:35	15:05	17:35	08:50	12:35	15:05	17:35	08:50	12:35	15:05	17:35	19:35	23:35	
<b>L'ALPE D'HUEZ</b> Office de Tourisme	08:55	12:40	15:10	17:45	08:55	12:40	15:10	17:45	08:55	12:40	15:10	17:40	19:45	23:45	
<b>L'ALPE D'HUEZ</b> L'Écluse	09:05	12:50	15:20	17:53	09:05	12:50	15:20	17:53	09:05	12:50	15:20	17:50	19:53	23:53	
<b>L'ALPE D'HUEZ</b> Les Bergers	09:10	12:55	15:25	17:55	09:10	12:55	15:25	17:55	09:10	12:55	15:25	17:55	19:55	23:55	
<b>L'ALPE D'HUEZ</b> L'Étendard	09:15	13:00	15:30	18:00	09:15	13:00	15:30	18:00	09:15	13:00	15:30	18:00	20:00	00:00	



	SATURDAY								SUNDAY & BANK HOLIDAYS										
<b>GRENOBLE</b> Gare routière	07:30	08:00	10:30	11:15	12:15	13:15	15:15	16:15	17:15	18:15	20:15	07:30	08:00	11:15	12:15	13:15	15:15	16:15	18:15
<b>L'ALPE D'HUEZ</b> Village	09:05	09:20	12:05	12:50	13:50	14:50	16:50	17:50	18:50	19:50	21:35	09:05	09:20	12:35	13:35	14:50	16:50	17:50	19:50
<b>L'ALPE D'HUEZ</b> Office de Tourisme	09:10	09:25	12:10	12:55	13:55	15:00	16:55	17:55	18:55	20:00	21:45	09:10	09:25	12:55	13:55	15:00	16:55	17:55	19:55
<b>L'ALPE D'HUEZ</b> L'Écluse	09:20	09:35	12:20	13:05	14:05	15:08	17:05	18:05	19:05	20:08	21:53	09:20	09:35	13:05	14:05	15:08	17:05	18:05	20:05
<b>L'ALPE D'HUEZ</b> Les Bergers	09:25	09:40	12:25	13:10	14:10	15:10	17:10	18:10	19:10	20:10	21:55	09:25	09:40	13:10	14:10	15:10	17:10	18:10	20:08
<b>L'ALPE D'HUEZ</b> L'Étendard	09:30	09:45	12:30	13:15	14:15	15:15	17:15	18:15	19:15	20:15	22:00	09:30	09:45	13:15	14:15	15:15	17:15	18:15	20:11

Only during Zone A school holidays: from 17/12/16 to 01/01/17 and from 18/02 to 05/03/17

Only during WINTER school holidays from 04/02 au 05/03/17

Connection at Bourg d'Oisans during certain periods.

More times may be added during the ski season.

Times given are for information only and are subject to weather and traffic conditions. Arrive early at the bus stops and be sure to anticipate enough time for any connections.

**FARES**

	Beneficiary	Sale on agencies	Sale on web
Single <sup>(1)</sup>	Open to all	19 €	18 €
Single reduced fare	under 26 years over 70 years	16 €	15 €
Single reduced fare	Transisère subscribers	13 €	12 €
5 single journeys	For 5 people travelling together at the same time and on the same day	62 €	60 €
Return	Open to all	31 €	30 €
Day return	Valid for a same-day return journey	19 €	18 €
Extra luggage		8 €	8 €
Non-standard or over-sized luggage	Open to all	16 €	16 €

<sup>(1)</sup> Single fare : sale on board 20 €. Free travel for children under 3 travelling on an adult's lap.



Day return bus + alpine ski pass Open to all. Day return ticket with fixed departure times. Special fare on thursday, except during school holidays.



Terms and conditions on [transaltitude.fr](http://transaltitude.fr)



Information & bookings at [WWW.TRANSALTITUDE.FR](http://WWW.TRANSALTITUDE.FR)

A booked seat = Seat guaranteed on board

1 luggage pack included in the price of the ticket (more details at [www.transaltitude.fr](http://www.transaltitude.fr))

Book online right up until departure (subject to seat availability)

Arrive 15 minutes before boarding with your tickets (printed out on paper or in electronic format on your smartphone)

Sales office at resort :

Palais des sports (guichet VFD)  
Centre culturel omnisport  
Tél. 04 76 11 38 10

ALLO Transisère  
0820 08 38 38  
0,12 € / minute



FROM 3 TO 30 APRIL 2017



## GRENOBLE ➔ L'ALPE D'HUEZ

	MONDAY TO THURSDAY		FRIDAY			SATURDAY / SUNDAY & BANK HOLIDAYS			
<b>GRENOBLE</b> Gare routière	11:15	16:00	11:15	16:00	18:30	07:30	11:15	16:00	18:30
<b>L'ALPE D'HUEZ</b> Village	12:35	17:20	12:35	17:20	19:50	-	12:35	17:20	19:50
<b>L'ALPE D'HUEZ</b> Office de Tourisme	12:45	17:30	12:45	17:30	20:00	09:05	12:45	17:30	20:00
<b>L'ALPE D'HUEZ</b> L'Écluse	12:53	17:38	12:53	17:38	20:08	09:12	12:53	17:38	20:08
<b>L'ALPE D'HUEZ</b> Les Bergers	12:55	17:40	12:55	17:40	20:10	09:15	12:55	17:40	20:10
<b>L'ALPE D'HUEZ</b> L'Étendard	13:00	17:45	13:00	17:45	20:15	09:20	13:00	17:45	20:15

## L'ALPE D'HUEZ ➔ GRENOBLE

	MONDAY TO THURSDAY		FRIDAY			SATURDAY / SUNDAY & BANK HOLIDAYS			
<b>L'ALPE D'HUEZ</b> L'Écluse	08:00	13:15	08:00	13:15	16:30	08:00	13:15	16:30	17:00
<b>L'ALPE D'HUEZ</b> Les Bergers	08:05	13:20	08:05	13:20	16:35	08:05	13:20	16:35	17:05
<b>L'ALPE D'HUEZ</b> L'Étendard	08:08	13:23	08:08	13:23	16:38	08:08	13:23	16:38	17:08
<b>L'ALPE D'HUEZ</b> Office de Tourisme	08:15	13:30	08:15	13:30	16:45	08:15	13:30	16:45	17:15
<b>L'ALPE D'HUEZ</b> Village	08:25	13:40	08:25	13:40	16:55	08:25	13:40	16:55	17:25
<b>GRENOBLE</b> Gare routière	09:45	15:00	09:45	15:00	18:15	09:45	15:00	18:15	19:30

### Connection at Bourg d'Oisans during certain periods.

Times given are for information only and are subject to weather and traffic conditions.

Arrive early at the bus stops and be sure to anticipate enough time for any connections.



**SPECIAL  
FARE  
Transisère  
subscribers**